

# Pierce County Soil Conservation District

Newsletter

July 2021

## Spring 2021 Tree Planting Recap

The 2021 spring planting season was a learning experience with it being my first year. With only one tree crew member having past experience, the rest of us were fast to learn a lot on the fly and quickly became accustomed to the do's and don'ts of tree planting and laying weed barrier fabric.

Our plantings consisted of 13 sites totaling 24,348 linear feet of trees and 23,424 linear feet of weed barrier fabric. Although small scale compared to some years I've heard, we plowed through (literally) all 13 sites with the tree planter and then again to most all with the fabric machine before the month of May had ended.

We were also fortunate enough to have a volunteer crew assist with replanting a site by hand that turned a 10 hour job into a 3 hour operation. For that we were very thankful for and have hopes that they will be willing to help again when needed next year.

With the extreme drought we have had this year, tree planting sounded like an impossible task. I wanted to give a shoutout to great landowner cooperation. Trees were watered immediately after planting or they would have had almost 0% chance of survivability. Some sites were found to have almost zero moisture but with hopes of continued care of watering and other maintenance I believe they should be just as successful as any normal rainfall year. Thanks to the landowners.



### FUTURE BOARD

#### MEETINGS

- August 10th
- September 14th
- October 12th
- November 9th

Meetings are at 8:30 a.m. and are held in the USDA conference room

#### District Staff

Andrew Oksendahl  
-District Technician -  
126 2nd Ave. SW Ste. 104  
701-776-2207 Ext. 3

#### SCD Board

#### Supervisors

James Teigen  
Joey Fritel  
Dan B Brossart  
Deb Hauser  
Dallas Hager

### **Note from Pierce County NDSU Extension Agent**

**Brenden Klebe:** Still doing nitrate testing in hay and water testing. 701-776-6234

#### In this Issue

- Spring 2021 planting
- Tree spade services for fall 2021/spring 2022
  - Tree Fabric Maintenance
- Tree of the Quarter
- Pheasants Forever
- Hand Plant Order Forms for 2022
- District Services
  - Plantskydd information.

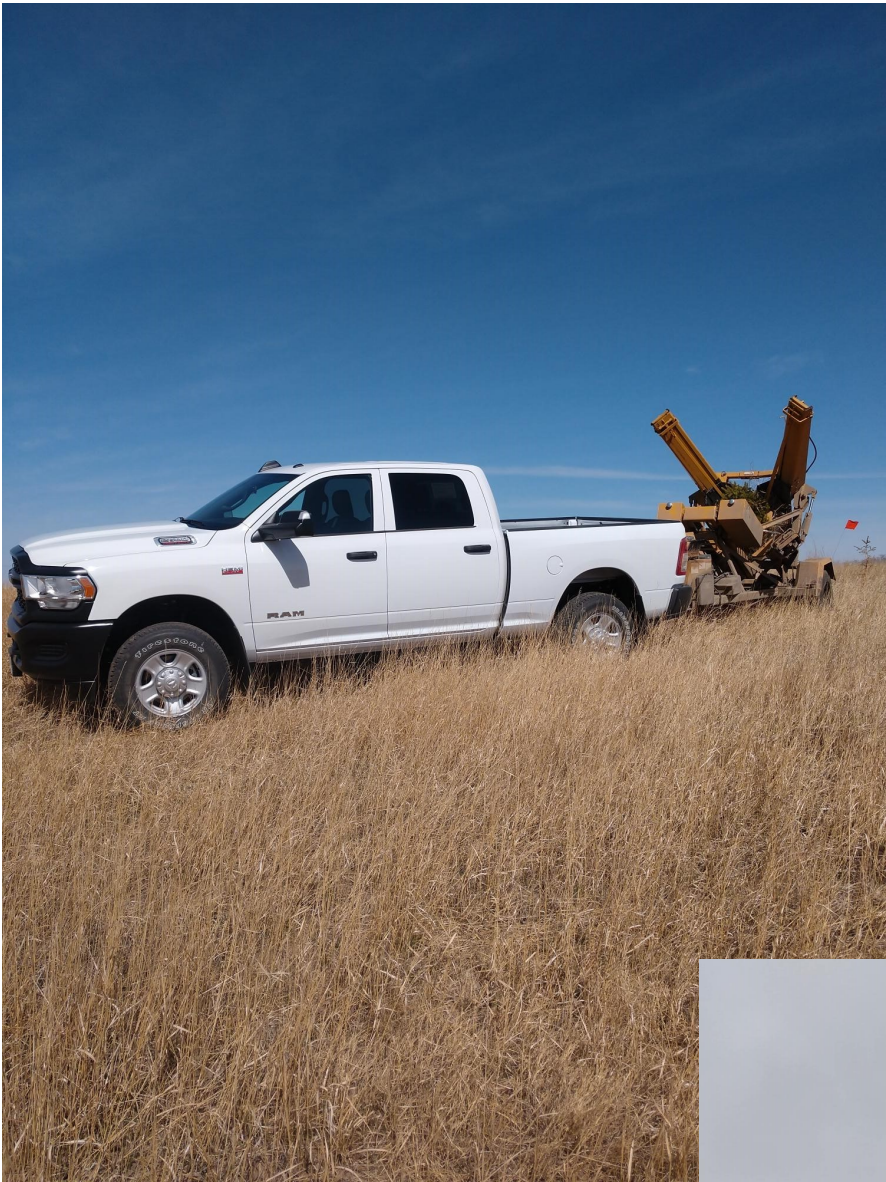
**2022 tree hand plant order forms are now available!**

**Anyone wanting tree rows machine planted spring 2022 call 701-776-2207 ext. 3**

# Tree Spade Moving Service

- ♦ I want everyone to know the Pierce County SCD has a tree moving service available.
- ♦ The following pricing is for **each** tree and includes a \$4 per loaded mile rate. (with tree)
  - \$55.00 (1-5 trees)
  - \$50.00 (6-10 trees)
  - \$45.00 (11+ trees)
- ♦ Tree spade use is best when trees are dormant in the spring around April and in the fall in September and October.
- ♦ It is encouraged to have trees flagged that are to be moved and have flags marking their new location.
- ♦ Watering trees and watering at their new location is recommended as it makes the moving process easier in hard ground and allows for better root establishment.
- ♦ The maximum size of trees able to be moved is 4.4 inch trunk diameter or smaller.
- ♦ Marking underground utility lines before digging is required. Landowners need to call 811 or obtain an online ticket on the NDonecall website prior to trees being moved.
- ♦ Anyone looking to have trees moved for fall 2021 or spring 2022 call 701-776-2207 Ext. 3







This article is published every so often in the newsletter. It will remain in the newsletter each quarter, it is  
**THAT IMPORTANT TO MANAGE YOUR TREE FABRIC**

# TREE FABRIC MANAGEMENT

## WEED BARRIER IS AN AID..... NOT A CURE ALL

Weed Barrier is an excellent option to aid in the control of weeds around new tree plantings for a successful growth. It saves time and money and if you are considering a new tree planting, I highly suggest considering having it installed.

### HOWEVER THE FABRIC MUST BE REMOVED/CUT BACK AS THE TREE GROWS

It is recommend inspecting your fabric once a year after snowmelt and before tree growth. Every 5 years you should create relief cuts with a box cutter on two or four sides of the tree trunk as needed. Care should be taken so as not to damage the tree. If the tree becomes girdled by the fabric (or other tree roots) and doesn't have room to grow the tree will suffer limited growth and may die altogether. A tree that becomes stressed due to girdling can grow around the fabric edge. This creates instability/weakness in the trunk and can result in premature death from winds and imbalanced weight.

As were are out and around the country side we have been trying to keep our eyes out for these tree plantings and stopping in to mention this, please spread the word! Call the Pierce County SCD if you have any questions regarding this.

**If you have had trees planted with fabric five or more years ago and haven't taken a look, it may be a good time to check them this year and cut slits as needed.**





# TREE OF THE QUARTER

## Silver Maple

**Related Species:** Red Maple, Freeman Maple: (Hybrid between Silver Maple and Red Maple and is best suited for North Dakota.)

**Urban/Recreational:** Useful in parks and large landscape areas with moist, well drained soils. Roots can be shallow, heaving sidewalks so planting location is key.

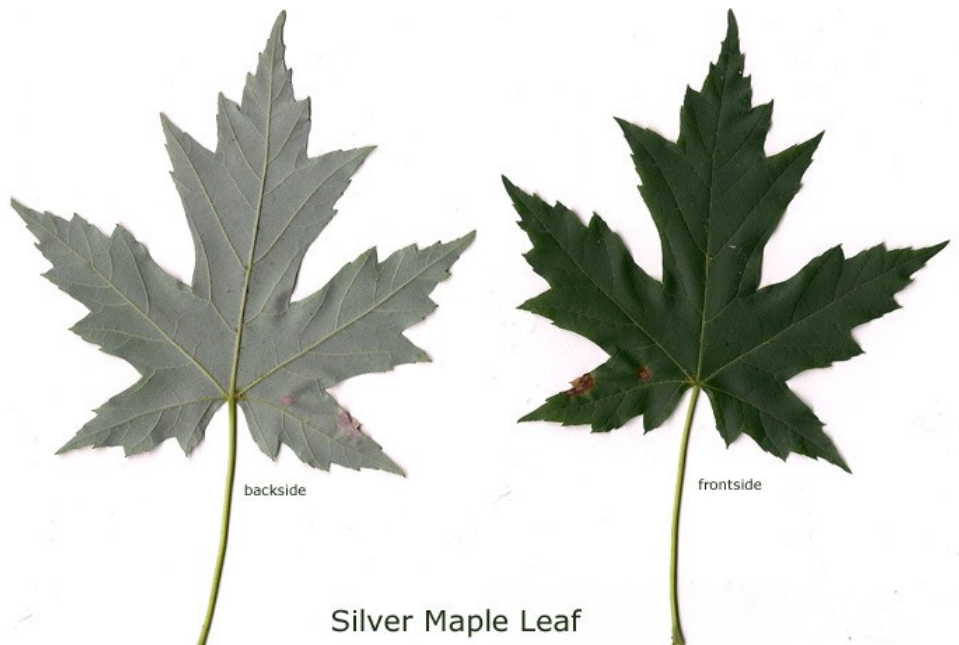
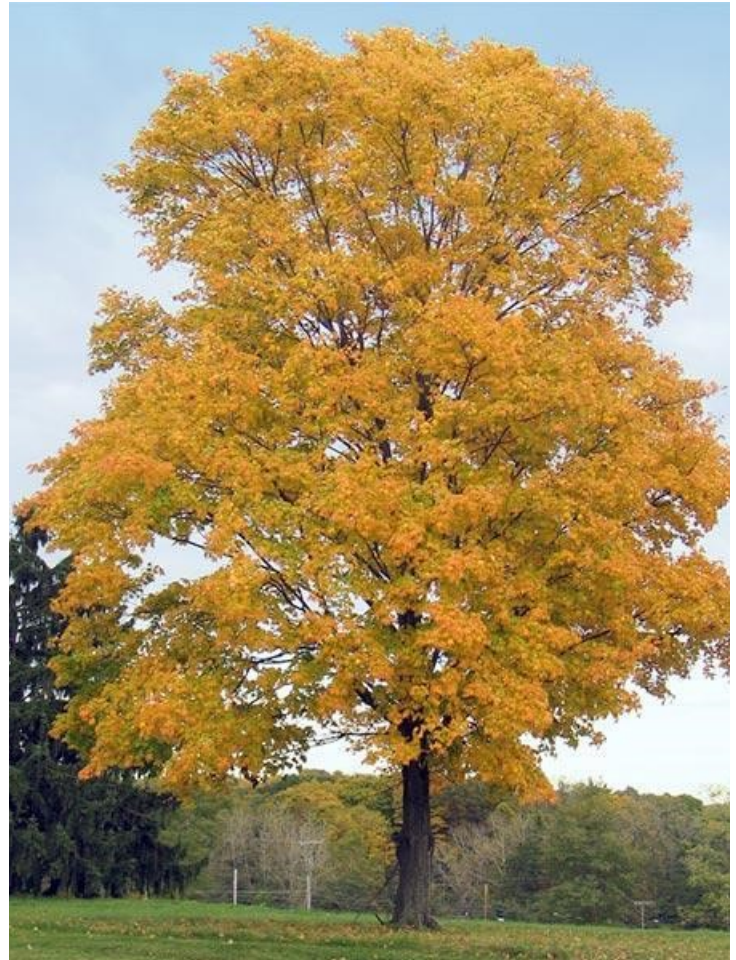
**Crown Height:** 40-65 feet

**Crown Width:** 30 to 50 feet

**Description :** A medium to large fast growing shade tree and known by it's distinctive leaf shape and looks.

**Wildlife:** Provides fair cover for songbirds and is browsed by deer and rabbits.

**Distribution:** One of the most common trees native to eastern and central United States and south eastern Canada.



Silver Maple Leaf



# Silver Maple Continued....





# Silver Maple (*Acer saccharinum*)

## General Description

A medium to large tree with spreading branches forming a variably rounded to informally spreading crown. A fast-growing tree subject to iron and manganese chlorosis on high pH soils which may cause dieback or eventual death. Often called soft maple because the wood is the softest of the maples used for lumber. The largest tree in North Dakota is 66 feet tall with a canopy spread of 72 feet.

### Leaves and Buds

Bud Arrangement - Opposite.

Bud Color - Red to reddish-brown; male flattened, ovoid; female clustered.

Bud Size - 1/8 inch long.

Leaf Type and Shape - Simple, five-lobed with deep sinuses.

Leaf Margins - Ends of lobes sometimes deeply and doubly-acuminate lobed.

Leaf Surface - Smooth, glabrescent below.

Leaf Length - 3 to 6 inches.

Leaf Width - 2½ to 5 inches.

Leaf Color - Medium-green above, silver-white beneath; yellow fall color.

### Flowers and Fruits

Flower Type - Borne in dense clusters.

Flower Color - Greenish-yellow to deep orangish.

Fruit Type - Double-winged samara (schizocarp).

Fruit Color - Brownish-tan.

### Form

Growth Habit - Upright with strong spreading branches, with semi-pendulous branches which turn up at the ends.

Texture - Medium-coarse, summer; medium-coarse, winter.

Crown Height - 40 to 65 feet.

Crown Width - 30 to 50 feet.

Bark Color - Gray to gray-brown.

Root System - Shallow, vigorous, grass-feeding root system can cause sidewalks to heave and buckle.

## Environmental Requirements

### Soils

Soil Texture - Performs poorly on tight clay soils.

Soil pH - 4.5 to 7.0. Not adapted to saline/alkaline soils.

Windbreak Suitability Group - 1, 3.

### Cold Hardiness

USDA Zone 3.

### Water

Susceptibility to drought, winter stem dieback, sunscald injury and chlorosis affected by genetic variability and original seed source.

### Light

Full sun.

## Uses

### Conservation/Windbreaks

Tall tree for farmstead windbreaks and riparian plantings in eastern third of North Dakota.

### Wildlife

Browsed by deer and rabbits, seeds eaten by squirrels, fair cover for songbirds.

### Agroforestry Products

Wood - Rough lumber, furniture and firewood. Pulpwood production. Twigs boiled to make a black dye by Native Americans.

Food - Sap may be used for maple syrup.

Medicinal - Extracts of some *Acer* species are used in cancer research.

### Urban/Recreational

Useful in parks and large landscape areas with moist soils. Not recommended for streets because of high maintenance from limb breakage.

## Cultivated Varieties

Beebe, Skinner and Wier's Cutleaf Maples (*Acer saccharinum* 'Beebe', 'Skinner' and 'Wieri') - Three cultivars with cutleaf foliage, slightly thinner stems and semi-pendulous branches.

Blair Maple (*A. saccharinum* 'Blair') - Reported to be stronger branched.

Northline Maple (*A. saccharinum* 'Northline') - Hardier selection introduced at the Morden Research Station, Manitoba.

Silver Cloud Maple (*A. saccharinum* 'Silver Cloud'). New hardy introduction from Manitoba; more compact and upright than 'Northline.'

Silver Queen Maple (*A. saccharinum* 'Silver Queen') - More upright in habit than the species and reported to be essentially seedless.

## Related Species

Black Maple (*A. saccharum* var. *nigrum*) - Hardy, including cultivar 'Green Column'.

Boxelder (*Acer negundo*)

Norway Maple (*A. platanoides*) and cultivars - Borderline to non-hardy.

Sugar Maple (*A. saccharum*) - Hardy, but prefers neutral to acid soil pH's and adequate moisture.

## Pests

Very subject to iron and manganese chlorosis in alkaline soils. Sensitive to phenoxy herbicides. Extracts of some *Acer* species exhibit toxic effects on insect pests.



# News from Pheasants Forever

Hello! My name is Joey Rasco. I am the new Precision Ag & Conservation Specialist with Pheasants Forever based out of Minot, ND. I cover the northwest and north central areas of the State. I started with Pheasants Forever at the end of November and am excited to be here. I am originally from Missouri and hold a degree in Fisheries and Wildlife Management from the University of Missouri. Right out of college I worked for the Missouri Department of Conservation, but prior to accepting my role with Pheasants Forever had been working in agronomy sales for a little over 2.5 years.



My aim is to work alongside farmers utilizing current technology and provide you the tools to make management decisions based on profitability and return on investment. In other words, I can help identify those acres that are losing money and present you with a suite of options to help improve your return on investment, soil and water quality, and create wildlife habitat. “Turning Red Acres, Green.”, as we like to call it here at Pheasants Forever.

Something that I have become familiar with in my short time here in North Dakota is salt impacted soils. It is something many farmers struggle with across the State. Areas impacted by salinity are typically unprofitable, reduce the average yield of your field, and if left untreated can impact more acres in your operation. One way to help combat salt impacts and begin restoring your soil is through the use of perennial grasses and cover crops. Using salt tolerant species and keeping the soil surface covered will aid in removing excess water in the soil through transpiration (through the plant) instead of evaporation from the soil surface. To put it simply, in doing this, the concentration of salts in the rooting zone should recede, and at minimum stop these areas from spreading.



# News from Pheasants Forever

A program Pheasants Forever has available for this area that specifically targets saline soils is the North Central Soil Health & Habitat Program. It is a flexible, short term program that offers up to 60% cost share on cover crops and perennial grass mixes. If you are interested in decreasing inputs, rehabilitating salt impacted areas, reducing soil erosion, and creating wildlife habitat, this could be a great program for you!

The goal for us here at Pheasants Forever is to help farmers and landowners find the right program that fits their needs and their operation. By using precision data, calculating ROI, and being able to present several alternative scenarios, it allows the grower the confidence to make the best decision for their operation and have the numbers to back it up. I want to help you get the most out of every acre.

Planting season will be here before you know it and now is the time to put together a plan for 2022. If you are interested in learning more about the North Central Soil Health & Habitat Program or other options that Pheasants Forever can assist you with, I would be more than happy to chat. My contact information is listed below or you can reach out to your local NRCS office. One of my favorite quotes is “If you fail to plan, you are planning to fail –Benjamin Franklin”. Here’s to planning on a successful 2022!

Joey Rasco

Cell: (636) 295-1398

Email: [jrasco@pheasantsforever.org](mailto:jrasco@pheasantsforever.org)

Twitter: @Joey\_Rasco

<https://pheasantsforever.org/Conservation/Precision-Agriculture.aspx>



# ND PHEASANTS FOREVER

North Central Soil Health & Habitat Program



## THE PROBLEM

Salt-impacted soils (excess levels of salts in the soil solution) are an increasing concern for North Dakota farmers, with an estimated 5.8 million acres affected in the state. The salts limit a crop's ability to take up water resulting in symptoms similar to drought-stress. This not only reduces yields, but in many cases, leaves barren areas in fields that are susceptible to soil erosion.

## THE PROGRAM

The North Central Soil Health and Habitat Program seeks to address salinity issues impacting soil health in Benson, Bottineau, Burke, McHenry, Mountrail, Pierce, Renville, Rolette, and Ward counties through cost-sharing seed for cover crop and grass mixes. Growing green in these areas allows water to move through a plant and transpire without raising salts to the surface, reducing inputs on those acres while lowering salt levels and providing wildlife habitat.





## PROGRAM DETAILS

- 60% cost-share on cover crop and grass mixes
- Customized seed mixes provided by Pheasants Forever staff
- Flexible short-term contracts
- Haying or grazing permitted outside of the primary nesting season (April 15-August 1)

## BENEFITS



Decrease Input  
Costs

Rehabilitate Salt-  
Impacted Areas



Reduce Soil  
Erosion

Create Wildlife  
Habitat



## PROGRAM CONTACT INFORMATION

Questions or interested in learning more about the North Central Soil Health and Habitat Program? Contact Joey Rasco with Pheasants Forever at [jrasco@pheasantsforever.org](mailto:jrasco@pheasantsforever.org) or (636) 295-1398





Pierce County SCD  
126 2nd Ave. SW Ste. 104  
Rugby, ND 58368  
701-776-2207 ext. 3

Name: \_\_\_\_\_  
Address: \_\_\_\_\_  
Phone: \_\_\_\_\_

[www.piercecountyscd.org](http://www.piercecountyscd.org)

**DEADLINE to order trees is January 5th, 2022**

Deciduous Trees	# of singles	# of bundles
Almond, Russian		
Apricot, Hardy		
Apricot, Hardy 3+'		
Ash, Green		
Ash, Green 5-6'		
Ash, Mountain		
Aspen, Quaking		
Boxelder		
Boxelder 2-3'		
Buckeye, Ohio**		
Buffaloberry		
Caragana		
Caragana 4-5'		
Cherry, Black		
Cherry, Nanking		
Cherry, Nanking 3'		
Cherry, Pin		
Cherry, Pin 3+		
Cherry, Sand		
Cherry, Mongolian		
Chokecherry, Common		
Chokecherry, Common 2-		
Chokecherry, Amur		
Chokecherry, Shubert		
Chokecherry, Shubert 3-4'		
Chokeberry, Black		
Cotoneaster, Pekin		
Cottowood, Siouxland		
Cottonwood, Siouxland		
Cottonwood, Native 4-5'		
Cottonwood, Native		
Cottonwood, Silver		
Cottonwood, Silver 3+'		
Crabapple, Dolgo		
Crabapple, Midwest		
Crabapple, Siberian		
Crabapple, red Splendor		
Cranberry, Highbush		
Currant, Golden		
Currant, Black		
Dogwood, Gray		
Dogwood, Redosier		
Dogwood, Silky		
Gooseberry		
Hackberry, Oahe**		

\*\* Good alternative for Green Ash

Deciduous Trees	# of singles	# of bundles
Hackberry, Northern		
Hackberry, Northern 2-3'		
Hackberry, Prairie Harvest		
Hawthorn		
Hazelnutt		
Honeysuckle, Arnold's Red		
Honeysuckle, Freedom		
Honeysuckle, Tatarian		
Forsythia, Medowlark		
Indigo, False		
Juneberry		
Lilac, Common		
Lilac, Common 3+'		
Lilac, Pekin		
Lilac, Japanese Tree		
Lilac, Vilosa (late)		
Lilac, Vilosa 2-3'		
Lilac, White		
Linden, American**		
Linden, Little Leaf**		
Maple, Amur		
Maple, Freeman		
Maple, Freeman 3+		
Maple, Red		
Maple, Silver		
Maple, Silver 3-4'		
Maple, Sugar		
Nannyberry, Verbatum		
Ninebark, Common		
Oak, Bur		
Oak, Bur 5-6'		
Oak, Red		
Oak, Red 2-3'		
Oak, Red 3-4'		
Oak, Swamp White		
Olive, Russian		
Pear, McDermand		
Pear, McDermand 2-3'		
Plum, American		
Plum, American 2-3'		
Poplar, Prairie Sky		
Poplar, Hybrid		
Poplar, Hybrid 5-6'		
Rose, Hansen Hedge		
Rose, Woods		



Deciduous Trees	# of singles	# of bundles	Coniferous Trees	# of singles	# of bundles
Seaberry/Sea Buckthorn			Eastern Red Cedar		
Silverberry			Rocky Mountain Juniper		
Sumac, Smooth			Ponderosa Pine		
Sumac, Bighorn			Scotch Pine		
Walnut, Black			Black Hills Spruce		
Walnut, Black 3-4'			Black Hills Spruce 16-24"		
Willow, Golden			Colorado Blue Spruce		
Willow, Golden 3-4'			Colorado Blue Spruce 16-24"		
Willow, Laurel Leaf			Container BHS		
Willow, Sandbar			Container CBS		
			Meyer Spruce		
			Siberian Larch		
			European Larch		
			Douglas Fir		
			Jack Pine		
			Lodgepole Pine		

Bundles of 25 must be of the same species

Bundle price does not include Tall Stock Trees

All trees are subject to availability from nursery sources

Other Items	Price	#Ordered	Amt. Due	Price	#Ordered	Amount
Staples - Singles	\$0.10			Single Trees	\$1.50	
Staples - Box of 500	\$45.00			Bundled Trees	\$30.00	
Plantskydd, 1 lb shaker*	\$14.95			Tall Stock	\$5.00	
Plantskydd, 1 qt. spray *	\$21.95			Taxable: _____ Nontax: _____ Subtotal: _____ Sales tax 7%: _____ (No tax on trees) Total Due: _____ 100% of Payment is due when trees are picked up		
Plantskydd, 1 lb. box*	\$29.95					
Plantskydd 3.5lb shaker*	\$26.70					
Plantskydd 8 lb shaker*	\$49.95					
Tree protector 5'	\$5.00					
Tree protector 2.5' (half)	\$2.50			For office use only Amount Paid: Check# Date:		
Fabric barrier by the foot	\$0.30					
Fabric Rolls (6'x500')	\$100.00					
Tree Mat 6'x6'/9 Staples	\$4.00					
Tree Mat 3'x3'/5 Staples	\$3.00					
Water Saver Kit*	\$26.75					
Critter Ramps	\$65.00					

Signature

Date

\*Items marked with  
asterisk will be taxed

# 2021 DISTRICT SERVICES AVAILABLE

(Prices subject to change)

## Tree planting (Conventional planter for tilled or no-till sites)

\$ 30.00 per 100 linear feet

\$ 200.00 minimum charge

## Hand plants Bare Root stock \$1.50 per tree (\$1.50/tree at tree sale)

25 Count Bundle \$30.00/per bundle/same species. Tall stock trees (2-3') \$5.00 each (no bundle price)

## Fabric Weed Barrier Service *A six-foot wide strip of synthetic barrier applied after the trees are planted*

\$ 55.00 per 100 linear feet

\$ 250.00 minimum charge

## Fabric/Staples

\$0.10/Staple or \$45.00/box of 500

\$0.30 per foot (6' wide) or \$100.00 per 6' roll

## Tree Mats (available upon request)

\$ 4.00 ea. (6' x 6' / 8 staples)

\$ 3.00 ea. (3'x3' / 5 staples)

## Tree Tube Protectors

\$ 5.00 each (5' protector) (+ tax)

\$ 2.50 each (2.5' protector) (+ tax)

## Tree Spade (moving trees) (Plus \$4 / loaded mile) \$ 55.00 each /move 1-5 trees

\$ 50.00 each / 6-10 trees

\$ 45.00 each / 11 or more

## Plantskydd Deer/Rodent Repellant ( + tax ) 1 lb. Soluble Powder Concentrate \$29.95

1 Qt Pre-mixed Spray \$21.95

1lb Shaker \$14.95

3.5 lb. Shaker \$26.70

8 lb. Shaker \$49.95

## Water saver kit \$26.75

## Stock Tank Critter Ramp \$65.00 each



# Plantskydd

## Animal repellent

**Plantskydd** is a repellent available to you from us to help protect your tree planting. Available as a granular, pre-mixed spray or concentrated powder form, Plantskydd can be applied on and around your tree plantings to deter animals such as deer, rabbits and mice before they start becoming a problem. Once applied, Plantskydd can last up to six months in the summer and 3 months in the winter. It is a good alternative to using fences and tree protectors. Plantskydd is listed on our hand plant order form and can be purchased at Rugby's NRSC/SCD office located in Hartley's Mall. 126 2nd Ave. SW Suite 104 or call 701-776-2207 ext. 3. Prices are listed on the previous page.

### Environment Friendly. 100% natural

- Non-toxic
- No synthetic additives
- Not harmful to humans
- Rainfast in 24 hours.

