

Pierce County Soil Conservation District

Newsletter

Fall 2023

Spring 2023 Tree Planting Recap

2023 planting season consisted of 37 sites totaling 154,957 linear feet of trees and 155,100 feet of fabric. That's over 300 rolls! There was once again a 2 week late start on planting due to snow storms, waiting for soil temperatures to rise, and waiting for trees to arrive from the nurseries, but some dedicated tree crew help allowed for early mornings and late evenings including weekends to finish in a timely matter by the June 1st planting deadline.

Tree Planting alone was a total of 16,960 trees covering 61.40 acres of land. In addition, there were over 5,000 hand plant pre-ordered trees, plus those sold at the tree sale held in June. I already have a list of 22 people wanting trees planted for next year and am currently working on those tree plans for next year.

There is a cost share opportunity available through the NRCS's Environmental Quality Incentives Program (EQIP) with a signup deadline of September 22nd, 2023. If approved, these are to be scheduled for planting in spring 2024 or 2025.



FUTURE BOARD MEETINGS

- October 17th
- November 7th
- December 12th

Meetings are at 8:30 a.m. and are held in the USDA conference room

District Staff

Andrew Oksendahl
-District Technician -
126 2nd Ave. SW Ste. 104
701-776-2207 Ext. 3

SCD Board

Supervisors

Dallas Hager (Chairman)
James Teigen
Joey Fritel
Dan B Brossart
Deb Hauser

NRCS EQIP signup deadline:

September 22nd, 2023

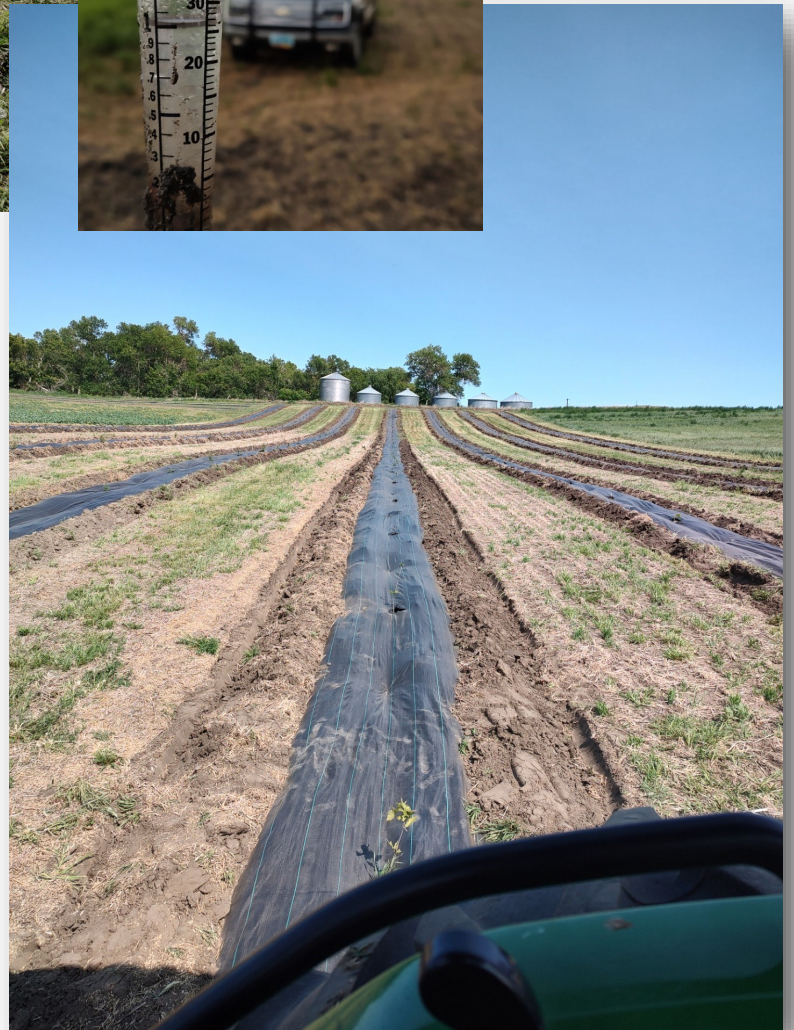
Cost share on trees for 2024-25 is an option through is program.

In this Issue

- Spring 2023 Planting Recap
- Award Winners
- Tree Spade Services 2023
- Fabric Advantages and Disadvantages
- Tree of the Quarter
- Hand Plant Order Forms
- District Services 2023
- Plantskydd Information
- USFWS Program
- DU Program Updates
- Pheasants Forever Program

**2024 tree handplant order forms are available! Preorder by December 15th.
If you want tree rows for spring 2024 call 701-776-2207 ext. 3 or stop by our office.**

Tree Planting Photo Collage



Tree Planting Photo Collage



Oppen's are Presented Conservation Award



Glen and Sadie Oppen received our plaque for the 2022 Conservation Award at our summer picnic last month. They were recognized at the National Convention last November for their outstanding conservation efforts and accomplishments for implementing a one pass cropping system along with planting cover crops for better soil health and extra grazing. They have put in new fences, wells, water tanks and pipeline to get fresh water to pasture and to graze cover crops. Their farm and ranch are located west of Rugby, where they have and are currently using the NRCS EQIP and CSP programs along with USFWS to better enhance their cropland and rangeland.

The Plaque is sponsored by both Bremer Bank and Merchants Bank. Pictured are Bremer Bank Representative Josh Mattson (Left) Glen and Sadie Oppen (Center) and Merchants Bank Representative Kasey Okke (Right)

Schmaltz's Receive Tree Maintenance Award

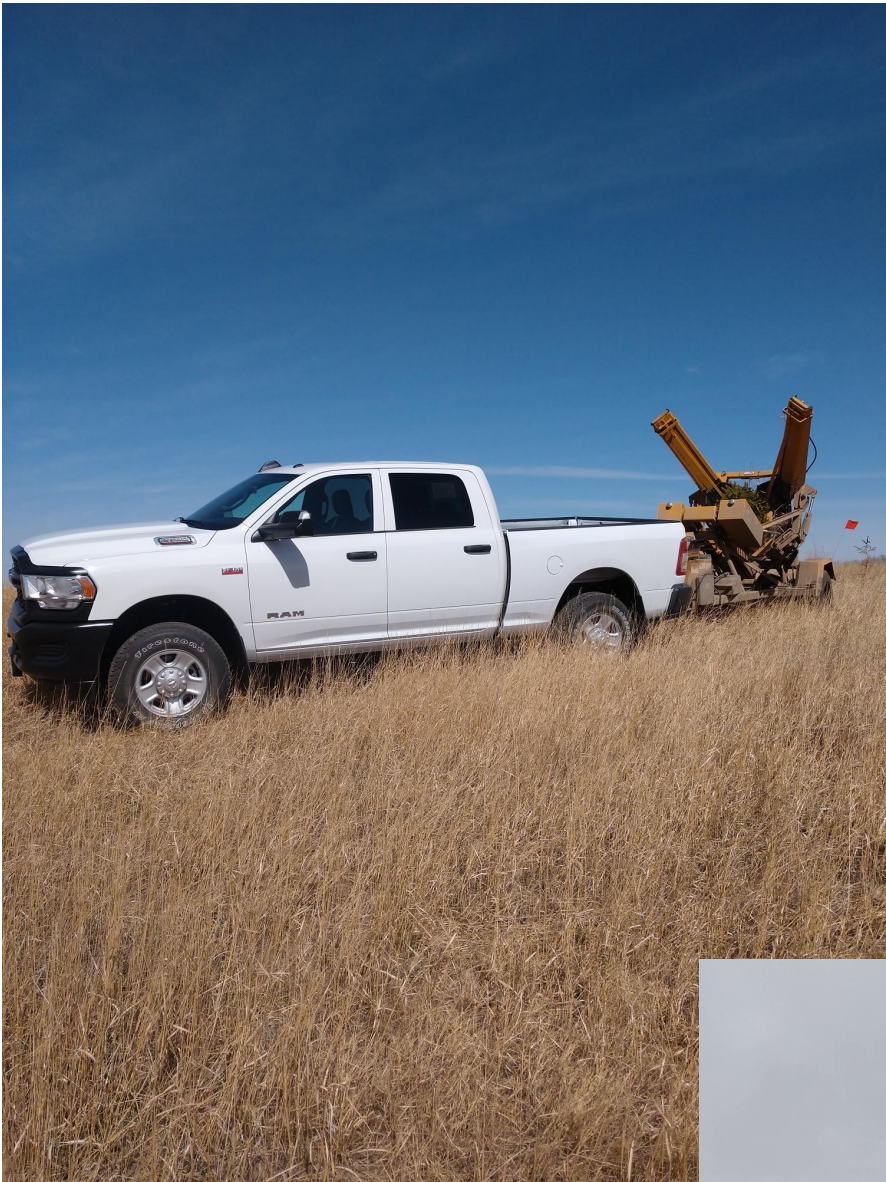


Darold and Tara Schmaltz (Center) received our plaque for the 2022 Tree Maintenance Award at our summer picnic last month. The plaque is sponsored by both Bremer Bank and Merchants Bank. Bremer Bank representative Josh Mattson (Left) and Merchants Bank Representative Kasey Okke (Right).

Tree Spade Moving Service

Now booking for Spring 2024

- ♦ Pierce County SCD has a tree moving service available.
- ♦ The following pricing is for **each** tree and includes a \$4 per loaded mile rate. (with tree)
 - \$55.00 (1-5 trees)
 - \$50.00 (6-10 trees)
 - \$45.00 (11+ trees)
- ♦ Tree spade use is best when trees are dormant in the spring around April and in the fall in September and October.
- ♦ It is encouraged to have trees flagged that are to be moved and have flags marking their new location.
- ♦ In drier areas, watering trees and watering at their new location is recommended as it makes the moving process easier in hard ground and allows for better root establishment.
- ♦ The maximum size of trees able to be moved is 4.4 inch trunk diameter or smaller. (Roughly 10 foot tall or smaller for most trees)
- ♦ **Marking underground utility lines before digging is required. Land-owners need to call 811 or obtain an online ticket on the NDonecall website prior to trees being moved.**
- ♦ If you are looking to have trees moved call 701-776-2207 Ext. 3



Synthetic Weed Control Fabric Advantages and Disadvantages

Craig Stange, Forester, Natural Resources Conservation Service, Bismarck, ND, December 2003

Thousands of miles of polypropylene woven fabric have been applied to conservation tree plantings for weed control throughout the Great Plains, resulting in improved survival and growth. Fabric both eases and complicates subsequent management of conservation plantings, even when properly applied.



"Ideal" fabric installation

Fabric Advantages

- Applied only once.
- Greatly increased tree and shrub establishment and survival. (Increases survival from 20% to 80%+).
- Increased growth rates immediately following planting.
- Easier and more timely weed control.
- Long-lasting weed control.
- Comparable cost to other weed control methods averaged over 5 to 10 years.

Fabric Disadvantages

- Initially expensive.
- Requires specialized machinery and trained crew to install properly.
- Proper installation is critical to prevent pulling loose in high winds.
- Does not break down, especially within the shade of trees and shrubs.
- Stems may be girdled by fabric as trees and shrubs grow.
- Suckering of some shrub species is greatly restricted within first 10 years.
- Dense sod can become established on top of fabric, negating benefits and complicating future maintenance.

Fabric Management

- Inspect annually or more often if needed.
- Ensure edges are firmly anchored.
- Ensure openings are not parallel to the grain of the fabric to avoid stem damage (X, C, J, or L shaped).
- Keep soil and organic matter off fabric.
- Control aggressive weeds that may establish in fabric openings.
- Enlarge openings as needed to prevent stem girdling.
- Consider alternative weed control where dense shrub thickets are desired.



Reduced suckering outside fabric. Chokecherry roots on top of soil immediately under, and parallel to fabric edge. Fabric has been removed.



Sod growing on top fabric



Stem girdling after 8 years

Conclusion

Fabric has greatly increased tree planting success and vigor in conservation plantings. However, it requires regular maintenance to prevent future damage to the planting. Since fabric can inhibit suckering of some shrub species, another weed control method may be more appropriate for certain types of plantings and/or landowners. Researchers continue to develop weed control materials that will provide effective initial control with minimal long-term negative aspects. New fabric types with varying amounts of photo degradation have been released to address potential girdling problems. Conclusions as to the success of these new fabric types are not expected for several years.

All programs and services are offered on a nondiscriminatory basis.

TREE OF THE QUARTER

Arnold Hawthorn

Cultivated Variety: Homestead Hawthorn

Water and Soil: Prefers well-drained soil and is drought tolerant once established. Works well in a 6G Conservation Tree and Shrub Group (CTSG). This includes soils with thin top soil layer and gravel sub soil.

Crown Height: 15-30 feet

Crown Width: 15-30 feet

Description: Broad, round, low-branched tree with hardiness zone 3.

Wildlife: Preferred nesting cover for songbirds, Fruit eaten by game birds, browsed by deer.



Arnold Hawthorn Continued....



Arnold Hawthorn



Arnold Hawthorn

(*Crataegus arnoldiana*)

General Description

Broadly rounded, low-branched tree with wide-spreading, horizontal branches which are densely set. This species performs well in North Dakota. Attractive white flowers and red fruit, thorny stems.

Leaves and Buds

Bud Arrangement - Alternate, sessile.

Bud Color - Round or oblong-ovoid, with about 6 exposed fleshy and bright red to reddish-brown scales.

Bud Size - Small.

Leaf Type and Shape - Simple, broadly-ovate, pubescent below.

Leaf Margins - Sharply-serrate above the entire base.

Leaf Surface - Fairly smooth, pubescent below.

Leaf Length - 1 to 3 inches.

Leaf Width - 3/4 to 1½ inches.

Leaf Color - Dark glossy green; yellow fall color.

Flowers and Fruits

Flower Type - Perfect, 1/2 to 2/3 inch in diameter, borne in 2 to 3 inch diameter, flat corymbs.

Flower Color - White, disagreeable odor, pink anthers.

Fruit Type - Pome, 1/4 to 1/2 inch in diameter.

Fruit Color - Bright red, glaucous.

Form

Growth Habit - Branches are upright to horizontal, broadly rounded in form.

Texture - Medium, summer; medium, winter.

Crown Height - 15 to 20 feet.

Crown Width - 15 to 20 feet.

Bark Color - Gray to brown.

Root System - Fibrous, spreading.

Environmental Requirements

Soils

Soil Texture - Adapted to a variety of soils.

Soil pH - 5.5 to 8.0.

Windbreak Suitability Group - 1, 1K, 3, 4, 4C, 5, 6D, 6G.

Cold Hardiness

USDA Zone 3.

Water

Prefers well-drained soils. Moderately drought tolerant.

Light

Full sun.

Uses

Conservation/Windbreaks

Large shrub or small tree for field and farmstead windbreaks, and riparian plantings.

Wildlife

Used for nesting sites by many songbirds. Fruit is utilized by song and game birds. Browsed by deer.

Agroforestry Products

Food - Fruit is used fresh or processed.

Medicinal - Contains amygdalin and alkaloid crataegin which is used as a cardio-diuretic tonic. Used as an astringent in a decoction for sore throats.

Urban/Recreational

Specimen, screen and parks. Well-adapted to environmental stresses. Tolerates the soot and grime of cities.

Cultivated Varieties

Homestead Hawthorn (*Crataegus arnoldiana* 'Homestead') - Released by USDA-NRCS, Plant Materials Center, Bismarck, North Dakota. A cultivar seed strain.

Related Species

Downy Hawthorn (*Crataegus mollis*)

Snowbird Hawthorn (*C. x mordenensis* 'Snowbird')

Thornless Cockspur Hawthorn (*C. crus-galli* var. *inermis*) - Excellent small landscape tree.

Pests

No major insect problems. Cedar-hawthorn rust causes some disfiguration of the leaves, but it does not limit the usefulness of this selection.

Pierce County Soil Conservation District

Tree Handplanting Order Form



Pierce County SCD
126 2nd Ave. SW Ste. 104
Rugby, ND 58368
701-776-2207 ext. 3

Name: _____
Address: _____
Phone: _____

www.piercecountryscd.org

Pre-order DEADLINE is December 15th, 2023. Late orders accepted depending on tree availability

Deciduous Trees	# of singles	# of bundles	Deciduous Trees	# of singles	# of bundles
Almond, Russian			Hackberry, Northern		
Apricot, Hardy			Hackberry, Northern (Tall) 2-3'		
Apricot, Hardy (Tall) 3+'	N/A		Hackberry, Prairie Harvest		
Ash, Green			Hawthorn, Arnold		
Ash, Green (Tall, 2-3')			Hazelnutt		
Ash, Mountain			Honeysuckle, Arnold's Red		
Aspen, Quaking			Honeysuckle, Freedom		
Boxelder			Honeysuckle, Tatarian		
Boxelder (Tall) 2-3'			Forsythia, Medowlark		
Buckeye, Ohio**			Indigo, False		
Buffaloberry			Juneberry		
Caragana			Lilac, Common		
Caragana (Tall) 2-3'	N/A		Lilac, Common (Tall) 3+'	N/A	
Cherry, Black			Lilac, Pekin	N/A	N/A
Cherry, Nanking			Lilac, Japanese Tree		
Cherry, Nanking (Tall) 3+'	N/A		Lilac, Vilosa (late)		
Cherry, Pin			Lilac, Vilosa (Tall) 2-3'	N/A	
Cherry, Pin (Tall) 3+'	N/A		Lilac, White		
Cherry, Sand			Linden, American**		
Cherry, Mongolian	N/A	N/A	Linden, Little Leaf**		
Chokecherry, Common			Maple, Amur		
Chokecherry, Common 3'			Maple, Freeman		
Chokecherry, Amur	N/A	N/A	Maple, Freeman (Tall) 3+'	N/A	
Chokecherry, Shubert			Maple, Red		
Chokecherry, Shubert 3-4'	N/A		Maple, Silver		
Chokeberry, Black			Maple, Silver (Tall) 3-4'		
Cotoneaster, Pekin			Maple, Sugar		
Cottonwood, Siouland			Nannyberry, Verbatum		
Cottonwood, Siouland 3'	N/A		Ninebark, Common		
Cottonwood, Native (Tall)			Oak, Bur		
Cottonwood, Native			Oak, Bur (Tall) 2-3'		
Cottonwood, Silver			Oak, Red		
Cottonwood, Silver (Tall)			Oak, Red (Tall) 2-3'		
Crabapple, Dolgo			Oak, Red (Tall) 3-4'		
Crabapple, Midwest			Oak, Swamp White		
Crabapple, Siberian			Olive, Russian		
Crabapple, red Splendor			Pear, McDermand		
Cranberry, Highbush			Pear, McDermand (Tall) 2-3'	N/A	
Current, Golden			Plum, American		
Current, Black			Plum, American (Tall) 2-3'		
Dogwood, Gray			Poplar, Prairie Sky		
Dogwood, Redosier			Poplar, Hybrid		
Dogwood, Silky			Poplar, Hybrid (Tall) 3-5'		
Gooseberry			Rose, Hansen Hedge		
Hackberry, Oahe**			Rose, Woods		

** Good alternative for Green Ash

N/A=Not Available (Sold Out)

Deciduous Trees	# of singles	# of bundles	Coniferous Trees	# of singles	# of bundles
Seaberry/Sea Buckthorn			Eastern Red Cedar		
Silverberry	N/A	N/A	Rocky Mountain Juniper		
Sumac, Smooth			Ponderosa Pine		
Sumac, Staghorn			Scotch Pine		
Walnut, Black			Black Hills Spruce		
Walnut, Black (Tall) 3-4'			Black Hills Spruce (Tall) 16-24"		
Willow, Golden			Colorado Blue Spruce		
Willow, Golden (Tall) 3-4'			Colorado Blue Spruce (Tall) 16-24"		
Willow, Laurel Leaf			Container BHS		
Willow, Sandbar	N/A	N/A	Container CBS		
			Meyer Spruce		
			Siberian Larch (Container Plug)		
			Douglas Fir (Container Plug)		
			Jack Pine		
			Norway Spruce		

Bundles of 25 must be of the same species
Bundle price does not include Tall Stock Trees

All trees are subject to availability from nursery sources

Other Items	Price	#Ordered	Amt. Due	Price	#Ordered	Amount
Fabric Staples - Singles	\$0.15			Single Trees	\$2.00	
Fabric Staples - Box of 500	\$70.00			Bundled Trees	\$40.00	
Plantskydd, 1 lb shaker*	\$14.95			Tall Stock	\$5.00	
Plantskydd, 1 qt. spray *	\$21.95			Taxable: _____ Nontax: _____ Subtotal: _____ Sales tax 7%: _____ (No tax on trees) Total Due: _____ 100% of Payment is due when trees are picked up		
Plantskydd, 1 lb. box*	\$29.95					
Plantskydd 3.5lb shaker*	\$26.70					
Plantskydd 8 lb shaker*	\$49.95					
Tree protector 5'	\$5.00					
Tree protector 2.5' (half)	\$2.50			For office use only Amount Paid: Check# Date:		
Fabric barrier by the foot	\$0.30					
Fabric Rolls (6'x500')	\$125.00					
Tree Mat 6'x6'/9 Staples	\$4.00					
Tree Mat 3'x3'/5 Staples	\$3.00					
Water Saver Kit*	\$26.75					
Critter Ramps	\$75.00					

*Items marked with
asterisk will be taxed

Signature

Date

Cooperator agrees not to hold the SCD or NRCS responsible for the performance of trees or weed control

2023 DISTRICT SERVICES AVAILABLE

(Prices subject to change)

Tree planting (Conventional planter for tilled or no-till sites)

\$ 35.00 per 100 linear feet

\$ 200.00 minimum charge

Hand plants Bare Root stock \$2.00 per tree

25 Count Bundle \$40.00/per bundle/same species. Tall stock trees (2-3') \$5.00 each (no bundle price)

Fabric Weed Barrier Service *A six-foot wide strip of synthetic barrier applied after the trees are planted*

\$ 55.00 per 100 linear feet

\$ 250.00 minimum charge

Fabric/Staples

\$0.15/Staple or \$70.00/box of 500

\$0.30 per foot (6' wide) or \$125.00 per 500' roll

Tree Mats (available upon request)

\$ 4.00 ea. (6' x 6' / 8 staples)

\$ 3.00 ea. (3'x3' / 5 staples)

Tree Tube Protectors

\$ 5.00 each (5' protector) (+ tax)

\$ 2.50 each (2.5' protector) (+ tax)

Tree Spade (moving trees) (Plus \$4 / loaded mile)

\$ 55.00 each /move 1-5 trees

\$ 50.00 each / 6-10 trees

\$ 45.00 each / 11 or more

Plantskydd Deer/Rodent Repellant (+ tax) 1 lb. Soluble Powder Concentrate \$29.95

1 Qt Pre-mixed Spray \$21.95

1lb Shaker \$14.95

3.5 lb. Shaker \$26.70

8 lb. Shaker \$49.95

Water saver kit \$26.75

Stock Tank Critter Ramp \$75.00 each

Plantskydd

Animal repellent

Plantskydd is a repellent available to you from us to help protect your tree planting. Available as a granular, pre-mixed spray or concentrated powder form, Plantskydd can be applied on and around your tree plantings to deter animals such as deer, rabbits and mice before they start becoming a problem. Once applied, Plantskydd can last up to six months in the summer and 3 months in the winter. It is a good alternative to using fences and tree protectors. Plantskydd is listed on our hand plant order form and can be purchased at Rugby's NRSC/SCD office located in Hartley's Mall. 126 2nd Ave. SW Suite 104 or call 701-776-2207 ext. 3. Prices are listed on the previous page.

Environment Friendly. 100% natural

- Non-toxic
- No synthetic additives
- Not harmful to humans
- Rain fast in 24 hours.



The North Dakota Partners for Fish & Wildlife Program

Dan Duchscherer
Private Lands Biologist
J. Clark Salyer NWR

In 1987, the U.S. Fish and Wildlife Service initiated the North Dakota PFW Program. Since then, this program has assisted private landowners, on a voluntary basis, with the restoration, enhancement, and development of thousands of acres of wetland and grassland habitats throughout the state. The PFW Program is driven by the belief that flexibility is the key to accommodating the needs of both wildlife conservation and sustainable agriculture. A key component of PFW's success is our flexibility with designing, funding and implementing conservation practices. Oftentimes, decisions on whether to move forward with a project can be made immediately. Landowners work directly with an individual PFW biologist to identify actions that provide benefits for wildlife as well as the landowner. For example, wetland developments often provide waterfowl production habitat and benefit livestock with additional water sources. Rotational grazing systems enhance native prairie plant communities as well as improve livestock performance by improving food sources. Grassland restorations provide immediate benefits to ground nesting birds and are greatly valued by ranchers as premium livestock pasture. These types of mutually beneficial projects are essential to an effective ecosystem conservation effort.

The three primary restoration and enhancement activities in the North Dakota PFW-Program include grassland seeding, managed grazing systems, and wetland restoration.

1) **Grassland seeding** primarily involves the seeding of cropland back to a mixture of grasses and forbs. The North Dakota PFW Program provides up to 100%

reimbursement for grass seed cost. The incentive to the landowner is they may graze the planting anytime or hay it after July 15th.

2) **Grazing Systems** primarily consists developing the infrastructure for rotational grazing. The North Dakota PFW Program provides up to 100% reimbursement for fence material along with 50%-60% of the cost for water development (wells, pipelines, water tanks etc.). The incentive to the landowner is better grass management and livestock production.

3) **Wetland restorations** primarily consist of plugging surface ditches with an earthen- dam. The North Dakota PFW Program provides 100% of the restoration cost.

PFW works with a wide variety of partners to implement voluntary wetland and grassland conservation projects to help ensure a sustainable future for rural communities, agricultural producers, landowners, and wildlife alike. Interest and participation in conservation measures and programs has increased dramatically in the last 20 years. Landowners have become more and more aware of the higher value placed on their land when conservation measures are implemented as well as the importance of their role in resource conservation. Working alongside a PFW biologist, landowners voluntarily develop projects, participate in their completion, and gain mutualistic benefits for their operations and the wildlife. This takes it beyond the initial government program and turns it into part of the local landscape. There is a pride in ownership that allows the benefits of the project to continue well beyond any timeline established on paper. As a result, thousands of acres of valuable habitat have been improved for current and future generations to use and enjoy.

For more information on the North Dakota Partners for Wildlife Program contact Dan Duchscherer at (701)537-3349.

Ducks Unlimited (DU) biologists assist producers in adopting a variety of conservation practices that are beneficial to their bottom line. For example, DU supports producers with cost-share to convert marginal cropland back to grassland. Additionally, DU provides cost-share for producers to put in fencing, water sources, and other infrastructure to implement rotational grazing systems. Livestock are moved among multiple paddocks to allow pastures to rest and grass to recover, replicating the behavior of bison herds that once intensively grazed prairie uplands for short periods of time before moving on. Pastures revitalized through rotational grazing are healthier and more resilient to drought. The enhanced grass growth also provides better upland cover for nesting ducks and other wildlife.

Working Lands Grazing Program: Producers have the ability to increase productivity of grassland acres while also increasing herd size using rotational grazing systems. Through Ducks Unlimited's Working Lands Grazing program, landowners can obtain cost-share for installing grazing infrastructure that facilitates rotational grazing. Rotational grazing systems revitalize upland acres in North Dakota that benefit prairie, livestock, wetlands and wildlife. Landowners with marginal cropland can utilize cost-share to replant degraded acres to a diverse, native grass stand intended for grazing.

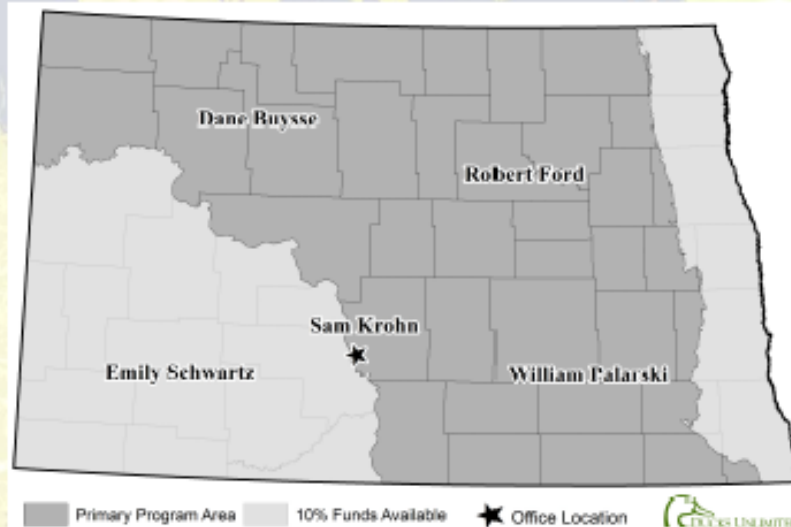
Cover Crop and Livestock Integration Project III (CCLIP3): Short-term voluntary program that offers opportunities to improve soil health and functionality by incorporating reduced tillage, cover crops, and livestock integration on croplands. These practices help restore soil organic matter, increase soil aggregate stability, reduce soil compaction, and increase water infiltration. Technical assistance and cost-share is available for grazing infrastructure on cropland such as fencing, wells, pipeline, pumps, and water tanks. CCLIP3 also offers cost-share on cover crop seed including those tailored for grazing, wildlife, aerial seeded and more.

Grassland Enhancement Project Phase II (GEPP2): Provides grazing incentives for lands open to the public, including State School Trust Lands, Waterfowl Production Areas, and PLOTS. GEPP2 offers cost-share on grazing infrastructure with the objective of improving soil health on pastures, providing reliable water resources on leased land and increasing plant diversity utilizing planned rest and recovery on paddocks to improve drought tolerance.

Working Grassland Partnership (WGP): WGP provides producers with voluntary options to develop expiring or expired CRP acres into livestock grazing systems. WGP promotes livestock grazing as a management tool for improving grassland

COVER CROP & LIVESTOCK INTEGRATION PROJECT III

A WORKING-LANDS CONSERVATION PROGRAM
FOR NORTH DAKOTA FARMERS AND RANCHERS



DIVERSIFY YOUR OPERATION

Cover crops and livestock will improve soil health and functionality by restoring organic matter, increasing aggregate development, reducing soil compaction, and increasing water infiltration.

✓ 5-Year Program

✓ Technical Assistance

Experts from **Pulse USA** and **Millborn Seeds** and **Ducks Unlimited** can help design custom mixes and grazing plans for your operation

✓ 60% Cost Share

- GRAZING INFRASTRUCTURE ON CROPLAND

- ~ Perimeter Fence
- ~ Cross Fence
- ~ Water Wells
- ~ Pipe
- ~ Pumps
- ~ Tanks
- ~ Windbreak Panels

✓ 60% Cost Share

- COVER CROP SEED

- ~ Grazing Mixes
- ~ Wildlife Mixes
- ~ Custom Mixes
- ~ Aerial Seeded Mixes



Improve Soil
Health!

Reduce input
costs!

Increase your
bottom line!

First-Come,
First-Served

No Batching
Periods

WILLIAM PALARSKI

Biologist 701-390-7382
wpalarski@ducks.org

DANE BUYSSE

Biologist 701-425-4852
dbuysse@ducks.org

ROBERT FORD

Biologist 701-230-2141
rford@ducks.org

SAM KROHN

Biologist 701-934-1635
skrohn@ducks.org

EMILY SCHWARTZ

Agronomist 701-805-1987
eschwartz@ducks.org



GRASSLANDS **E**NHANCEMENT **P**ROJECT **P**HASE II

A project funded by North Dakota's Outdoor Heritage Fund in partnership with Ducks Unlimited.



This project provides grazing incentives for state school trust and public land lessees.

Project Area: North Dakota (Statewide)

- State School Trust Land
- Public Land
- PLOTS

Funding: 60% Cost-share on grazing infrastructure and vegetation establishment

- Water Well
- Solar Pump System
- Pipelines
- Rural Water
- Water Tanks
- Grass Plantings

Objectives:

- Improve soil health on pastures
- Provide reliable water resources on leased land
- Increase plant diversity
- Planned rest recovery on paddocks to improve drought tolerance



North Dakota Conservation Programs Team



Contact Us Today
For More Information:

Dane Buysse
Ducks Unlimited
2525 River Road
Bismarck, ND 58503

O: 701-355-3584

C: 701-425-4852

dbuysse@ducks.org

Dane Buysse - Biologist
Bismarck, ND
(701) 355-3584 (office)
(701) 425-4852 (cell)
dbuysse@ducks.org

Emily Schwartz - Agronomist
Bismarck, ND
(701) 355-3536 (office)
(701) 905-1967 (cell)
eschwartz@ducks.org

Sam Krohn - Biologist
Bismarck, ND
(701) 355-3577 (office)
(701) 924-1635 (cell)
skrohn@ducks.org

Robert Ford - Biologist
Bismarck, ND
(701) 355-3530 (office)
(701) 250-2141 (cell)
rford@ducks.org

William Palarski - Biologist
Bismarck, ND
(701) 355-3510 (office)
(701) 260-7362 (cell)
wpalarski@ducks.org



PHEASANTS FOREVER AND QUAIL FOREVER PRECISION AG & CONSERVATION

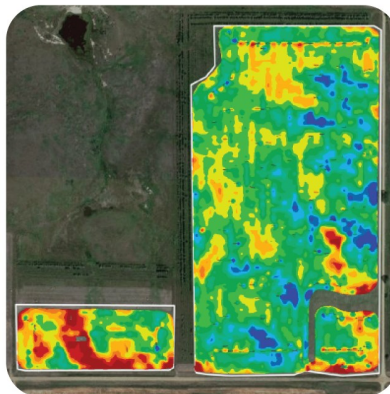
TURNING **RED** ACRES **GREEN**

Free on-site consultations with your local specialist can provide:

- Unlimited technical analysis of farm data to identify non-productive, red, acres.
- Producer-led plans for turning those red acres green!
- A trusted resource in navigating the slough of conservation programs available to you!

With Precision Ag data, we can transform your marginal and unproductive red acres:

From this...



To this!



All while increasing your field's
Revenue Potential!

- Reducing Input Costs
- Restoring Soil Health
- Increasing Input Efficiency
- Providing Perennial Cover and Forage

Optimizing your operation?

Warren Swenson

(701) 891-1803

wswenson@pheasantsforever.org

Minot, ND

